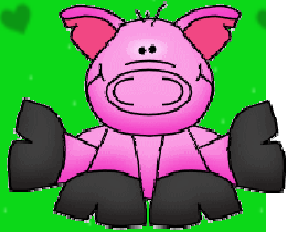


DOWN ON THE FARM

Farm Alphabet

(Source unknown)



A is for the apples that grow on trees.
B is for the barn where animals live.
C is for the cow that gives milk.
D is for the dog that guards the sheep.
E is for the eggs we eat for breakfast.
F is for the farmer who works on the farm
G is for the garden where food is grown.
H is for the horses and the hay they eat.
I is for the ice cream that is made from milk.
J is for the jelly that we eat on toast.
K is for the kids which are baby goats.
L is for the lambs that supply us with fleece.
M is for the milk that we like to drink.
N is for the nest in which eggs are laid.
O is for the overalls that some farmers wear.
P is for the pigs that cool off in the mud.
Q is for the quilts that keep us warm.
R is for the rooster who crows in the morning.
S is for the silo where silage is kept.
T is for the turkey we eat at Thanksgiving.
U is for the udder that you find on a cow.
V is for the vines where pumpkins grow.
W is for the wool that we get from sheep.
X is for X-mas-tree farms where we buy Christmas trees.
Y is for the yarn that is made from fleece.
Z is for the zinnia, a flower that's nice.



This document was created with Win2PDF available at <http://www.win2pdf.com>.
The unregistered version of Win2PDF is for evaluation or non-commercial use only.
This page will not be added after purchasing Win2PDF.